

Isatis in the heart of your oil reservoir modelling workflow

Access quickly Isatis powerful geostatistics and improve the accuracy and robustness of your reservoir model

Isatis is the ideal companion software product to go further with advanced and sound geostatistics. This is why it offers powerful integrative capacities by providing numerous import and export interfaces with other vendors' packages. Using Isatis, it has never been so easy to gather, within a single database, data of different qualities, specialties, geographic origins or vintages.

The major software vendors have also recognized the importance of advanced geostatistics to go further in earth modelling and resource evaluation. This is why they offer direct links with Isatis in their earth modelling software packages. These seamless bridges strengthen the consistency and ease-of-use of your tools.

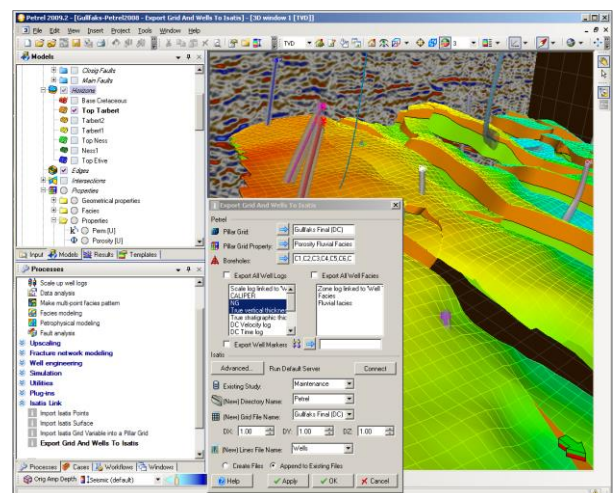
PETREL™ - ISATIS link

The **Petrel-Isatis link** is a plug-in extension fully integrated in Petrel™. It allows the Petrel™ user to:

- Import **Isatis Point** variables as new **Petrel™ PointSets**.
- Import **Isatis Surface** variables as new **Petrel™ surfaces**.
- Import **Isatis Grid variables** to an existing **Petrel™ pillar grid**.
- Export **Petrel™ Pillar Grids** as new **Isatis Grid Files**.
- Export **Petrel™ Surfaces** to **Isatis** with their properties.
- Export **Petrel™ Boreholes** as **Isatis Lines Files** with their attached properties (*Logs* and *Facies*).
- Export **Petrel™ Upscaled Logs** as **Isatis Pseudo Vertical Wells**.
- Export **Well Makers** to **Isatis Points Files**.
- Use with **Petrel™ 2012, 2013 and 2014 (64-bit)**.

The link can be used either interactively or in a workflow.

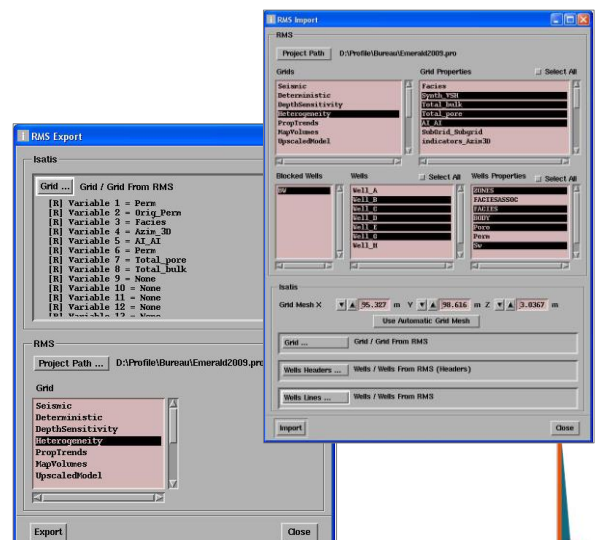
It is developed and distributed by Geovariances.



RMS™ import/export plug-in

The **RMS import/export plug-in** is an extension in Isatis. It allows the Isatis user to:

- Export **Isatis Grid variables** to an existing **RMS™ grid**.
- Import **RMS™ Grids** as new **Isatis Grid Files**.
- Import the attached **Grid Properties** as new **Isatis variables**.
- Import **RMS™ Blocked Wells** as **Isatis Lines Files**.
- Import attached **Well Properties** as new **Isatis variables**.



The plug-in requires a valid RMS license to be used.
It is developed and distributed by Geovariances.

GOCAD™ - ISATIS link

The **Gocad-Isatis link** is a plug-in extension fully integrated in Gocad™.

It allows the Gocad™ user to access any of the Isatis projects on the network, directly from the **Import Objects** menu in Gocad™.

Conversely, the **Export Objects** menu enables fast transfer of Gocad™ objects to Isatis projects.

Most GOCAD™ objects are handled by this plug-in:

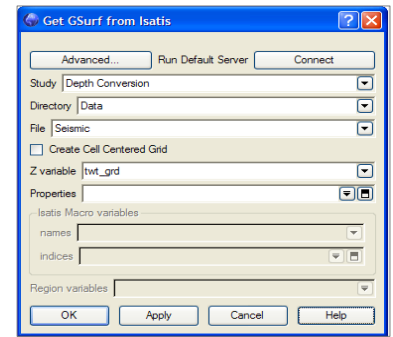
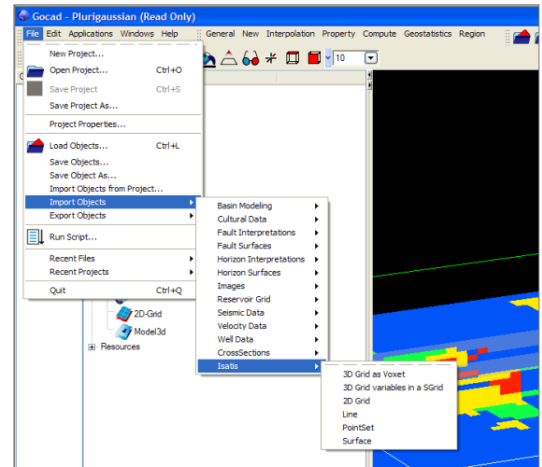
- **Voxets** and **SGrids** and associated data (transposed into Isatis 3D Grids).

Advanced kriging and simulation methods can be applied on properties directly inside a Paleo-environment stratigraphic grid. The results can then be recovered in GOCAD™, to display the properties in their current structural position.

- **2D Grids.**
- **Curves** (Isatis Lines).
- **PointSets** (Isatis Points).
- **Triangularized surfaces** (Isatis Wireframe).

Open surfaces are automatically closed.

The link, developed by Paradigm, is provided by default in Gocad™.

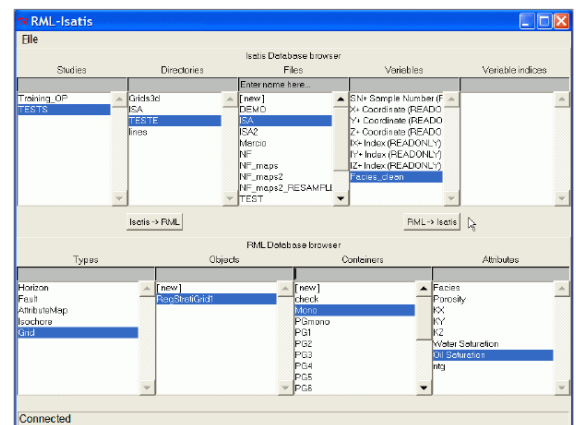


RML™ - ISATIS link

The **RML-Isatis link** is a plug-in extension fully integrated in the RML™. It allows the RML™ user to easily exchange objects between both software packages:

- Horizons
- Faults
- Attribute maps
- Isochores and grids
- Wells
- Polylines

The link, developed by Beicip-Franlab, is provided by default in the RML™.



Import / export interfaces with standard packages

Isatis offers powerful integrative capacities by providing a wide range of import and export interfaces with standard packages, including **CMG, Eclipse, Irap Classic, LAS, SEG-Y, VIP, Z-Map Plus.**