

Press kit

Kartotrak.one 2016 | June 2016

Worldwide leader in Geostatistics, Geovariances enables its clients involved with mapping, resource estimation or risk analysis to benefit from more than 30 years' experience in marketing geostatistics software solutions and expertise to Oil & Gas, Mining and the Environmental sectors.

Press Contact :

Elodie Galloyer

E-marketing, PR and communication officer

+33.1.83886048

galloyer@geovariances.com



Geovariances
Where no one has gone before

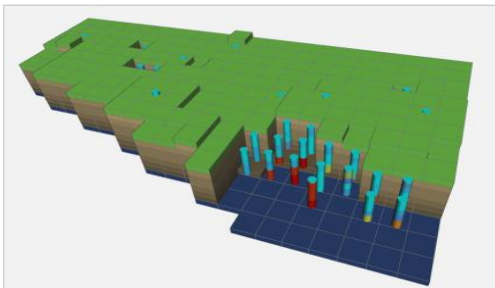
A. Contents of the press kit

A.	Contents of the press kit	2
B.	Press release	3
C.	Kartotrak.one technical features.....	4
D.	Geovariances	5
E.	Geovariances vision.....	6
F.	Priority targets and a few customer references.....	7
G.	Organization chart.....	8

Elodie Galloyer e-marketing, PR and communication officer
+33.1.83886048 - galloyer@geovariances.com

Avon, June 2016 – Kartotrak.one, the only software which generates excavation plans on a sound basis

Geovariances has launched the **latest release of Kartotrak.one**, its fast characterization solution for all remediation projects. This new release offers an outstanding tool for **quick generation of excavation plans**. The main interest of such a feature is to offer users the possibility of trying and comparing different remediation scenarios before starting the remediation work.



Example of an excavation plan in 3D generated with Kartotrak.one

Kartotrak.one has been designed for anyone involved in **site characterization projects** to help them **improve their knowledge of the contamination** and **build an appropriate remediation strategy**. The software allows **thorough data quality control** and **accurate contamination mapping**.

Kartotrak.one easily and quickly generates reliable excavation plans based on **objective and relevant elements** including **sampling strategy** and **3D interpolated contamination maps** contrarily to subjective usual practices.

With Kartotrak.one, the user may also refine excavation plans interactively to adapt them to remediation constraints allowing to include or to exclude given blocks in the excavation.

"Using Kartotrak.one, you immediately know if your **excavation plan is effective**", said Yvon Desnoyers, Gestatistician, specialist in radiological characterization. "The new tool **computes and displays the total volume and surface of soil to be excavated and those left in place** if you choose not to remove the whole contamination. And you are immediately aware of the percentage of pollution that will actually be removed given the input data", he added.

Knowing the efficiency of the remediation, users can then easily **conduct a sensibility study of the excavation plan efficiency according to a given remediation strategy**. This new fonctionnality allows a better management of the remediation work.

Kartotrak.one is very **affordable** and **easy-to-use**.

*Geovariances consultants will present and make demos of **Kartotrak.one** at **WNE from June 28 to 30, 2016** at Le Bourget, France.*

Elodie Galloyer e-marketing, PR and communication officer
+33.1.83886048 - galloyer@geovariances.com

C. Kartotrak.one technical features

Kartotrak.one, fast characterization solution for all remediation projects

Born out from several years' partnership between CEA and Geovariances, **Kartotrak.one** brings an efficient solution to all those – industrials, local authorities or consultancies - who need to locate and estimate the surfaces or the volumes of contaminated soils or facilities confidently.

Kartotrak.one improves the knowledge and understanding of the contamination and allows to better prepare site remediation, and thus, to optimize remediation-related costs.

Kartotrak.one facilitates contaminated soils study

Kartotrak.one is an innovative software solution. Easy to use, the software offers an integrated workflow which guides the user through each step of his project, from data loading and analysis to contamination mapping and excavation plan production. On-the-fly reporting is also proposed all along the workflow.

Kartotrak helps in:

1. Placing the contamination in its environmental context

Combining the power of a GIS and a 3D Viewer, Kartotrak integrates and displays any spatial information on the contamination vicinity - aerial photos, maps, historical data, geophysical data - and allows the visualization of the measurement points or boreholes and the calculated maps.

2. Getting precise contamination maps

Kartotrak is built on Geovariances geostatistics expertise to offer a proven geostatistics process, fast to use by most people. Kartotrak delivers accurate interpolated maps as well as uncertainty maps providing additional information on result quality and reliability.

3. Generating excavation plans

Kartotrak 2016 provides a sound and objective base to generate accurate excavation plans, letting you compare the efficiency of different remediation scenarii, thus paving the way to much better remediation management.

NB: Kartotrak.one derives from Kartotrak, Geovariances integrated software solution for contaminated site characterization. Kartotrak, in its full version, enables more advanced geostatistical data modeling and uncertainty quantification associated with contaminated volumes or masses of pollutants. It can also model several pollutants together.

Elodie Galloyer e-marketing, PR and communication officer
+33.1.83886048 - galloyer@geovariances.com

D. Geovariances

Created in 1986, **Geovariances** is a French independent software vendor and the world leader in Geostatistics.

With its constant investment in R&D, Geovariances offers innovative methodologies and expertise to answer its customers' challenges in mapping, resource evaluation, volumetric estimation, risk analysis. The company provides the most complete solution in geostatistics: software packages, training and consulting.

Geovariances develops and sells two software packages: **KARTOTRAK** dedicated to contaminated site characterization, and **ISATIS**, the industry benchmark geostatistics software solution.

Geovariances headquarter is based in Fontainebleau. The company has also an office in Brisbane (Australia) and a representative in Brazil.

Key events

- **1986:** Geovariances was created by three engineers from Mines ParisTech.
- **1993:** Launch of the first version of ISATIS, the most complete solution in geostatistics on the market.
- **2000:** Partnership agreement with Mines ParisTech for ISATIS development.
- **2001:** First application of ISATIS for air quality mapping.
- **2002:** Development of the software team at Geovariances, speeding up ISATIS development.
- **2005:** Development of the marketing and sales team. The company turnover doubles in less than 3 years.
- **2009:** Partnership agreement with CEA for KARTOTRAK development, software solution for polluted site and soil characterization.
- **2010:** Geovariances consultant Yvon Desnoyers presented his PhD thesis: "Geostatistical characterization of radiological contaminations in former nuclear facilities".
- **2010:** Launch of the first version of KARTOTRAK, new software solution dedicated to radio-contaminated site and soil characterization.
- **2014:** Opening of Geovariances office in Perth, WA, Australia
- **2015: Olivier Bertoli is nominated Managing Director of Geovariances**
- **2016: Launch of Kartotrak.one**

Key figures:

- Number of employees : **40**
- **1 subsidiary office** in Australia
- Turnover : **+5 M€**
- International turnover : **4 M€**
- **+500** company customers over the world
- **+3500** software users over the world

Elodie Galloyer e-marketing, PR and communication officer
+33.1.83886048 - galloyer@geovariances.com

E. Geovariances vision

❖ **To offer our customers the leading-edge technologies in geostatistics**

Based on a research and partnership strategy

While independent software vendor, Geovariances invests in R&D via consortia and partnerships with research centers world leaders in Geostatistics or their respective industries, to provide even more innovative solutions and closer to the needs of its customers.

❖ **To provide the most complete solution in geostatistics**

To answer any kind of expectations, from the beginner to the expert in geostatistics

With its highly qualified human resources in geostatistics, mathematics, geology and software development, Geovariances can offer the expertise industrials, consultancies or local authorities who need to apply geostatistics in response to their specific problems expect.

The service as a priority

Geovariances is well aware of the strategic challenge conducted studies or software computing results mean for its customers. The company builds on its partners' and own expertise to answer its clients' challenges and to provide solutions on which they can rely confidently. That is why Geovariances is committed to offer quality and accuracy to the users of its software packages.

Whether its customers encounter a technical problem or they need to be guided in the software use, Geovariances' aim is that software users come back to their productive task as quickly as possible.

Geovariances Technical Support, consisting of specialists, is in direct contact with the users to respond quickly their questions and is committed to keep in touch with them as much as they need. That is why **Geovariances Technical Support** is recognized and praised by all its beneficiaries.

❖ **To be the first geostatistics sponsor**

And develop new markets

Geostatistics is essential in a world where needs in raw material are constantly growing and natural resources are everyday scarcer and deeper and complex to extract, and where environmental risk control becomes compulsory. Advanced geostatistics allow better estimation of resources or better characterization of pollution and enable an improved risk assessment. Geostatistics is the essential tool for a better waste management and a better cost control.

So that everyone can benefit from geostatistics added value, Geovariances offers a large portfolio in geostatistics training and helps everyone who need to go further in their projects by offering specific mentoring services.

Geovariances' aim is to keep its leadership in geostatistics after more than 25 years' experience worldwide.

Elodie Galloyer e-marketing, PR and communication officer
+33.1.83886048 - galloyer@geovariances.com

F. Priority targets and a few customer references

❖ **Priority targets**

Consultancies, safety authorities, owners of industrial sites, geologists and geostatisticians, ordering parties (districts, counties, municipalities...).

❖ **Some customer references**

In France

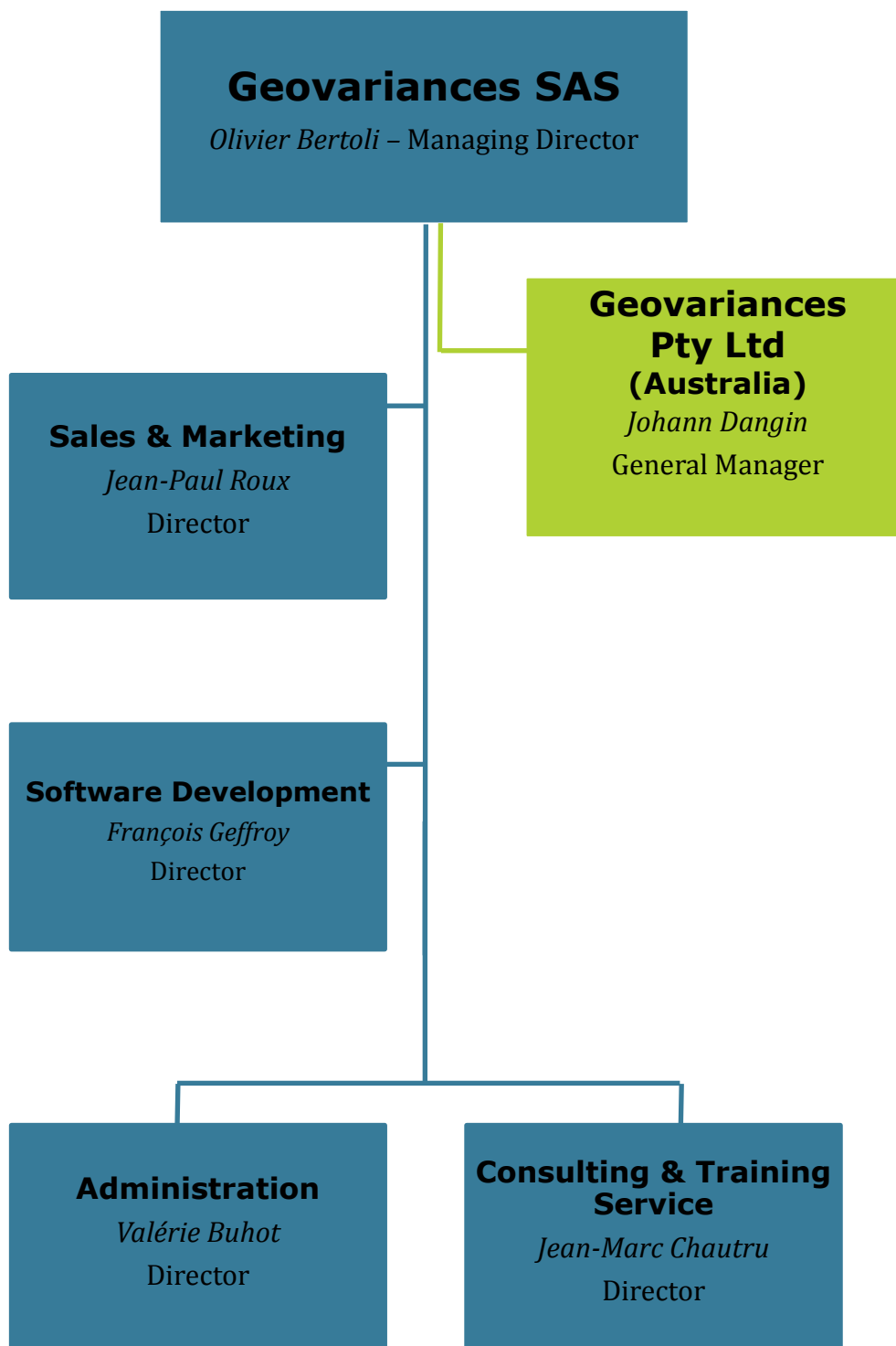
- ARCADIS,
- AREVA,
- CEA,
- DEKRA,
- EDF Ciden,
- IRSN,...

To international

- AECL,
- ENRESA,
- SELLAFIELD Ltd,
- STUDSVIK...

Elodie Galloyer e-marketing, PR and communication officer
+33.1.83886048 - galloyer@geovariances.com

G. Organization chart



Elodie Galloyer e-marketing, PR and communication officer
+33.1.83886048 - galloyer@geovariances.com

