

## FAST ACCESS TO ISATIS POWERFUL GEOSTATISTICS FROM GEMS

**Geovia GEMS™ import and export interface offers GEMS users easy access to the full capabilities of Isatis.**

Of special interest to GEMS users will be the near seamless movement of data into Isatis' advanced linear and non-linear interpolation techniques such as:

- Ordinary kriging
- Indicator kriging
- Disjunctive kriging
- Uniform conditioning
- Grade or geology stochastic conditional simulations.

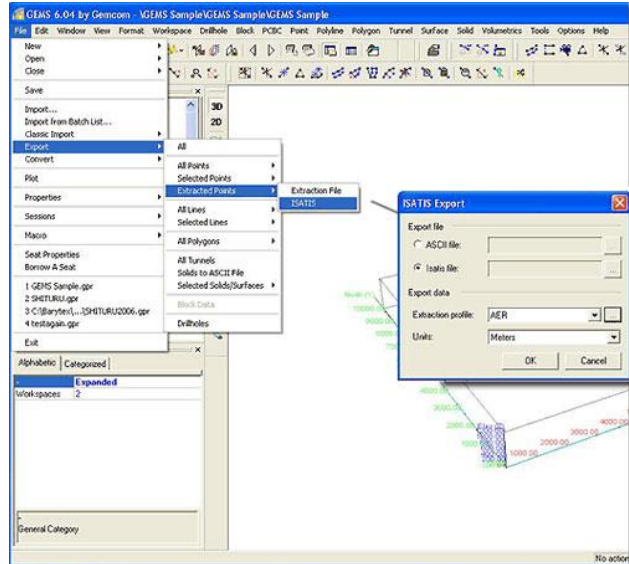
These interfaces are provided in the standard version of GEMS™ (please contact Geovia for more information).

Three kinds of files/objects can be passed using this interface:

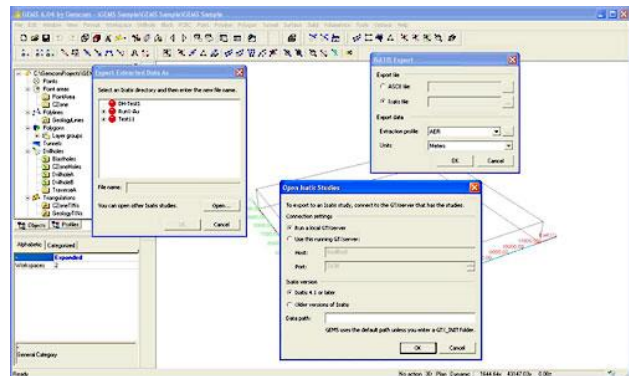
- Standard ASCII files
- Drillhole data into an Isatis Lines file
- The geometry of a GEMS block model into an Isatis 3D Grid.

This allows Isatis to do interpolations for individual block model blocks based on its definitions as passed in from GEMS.

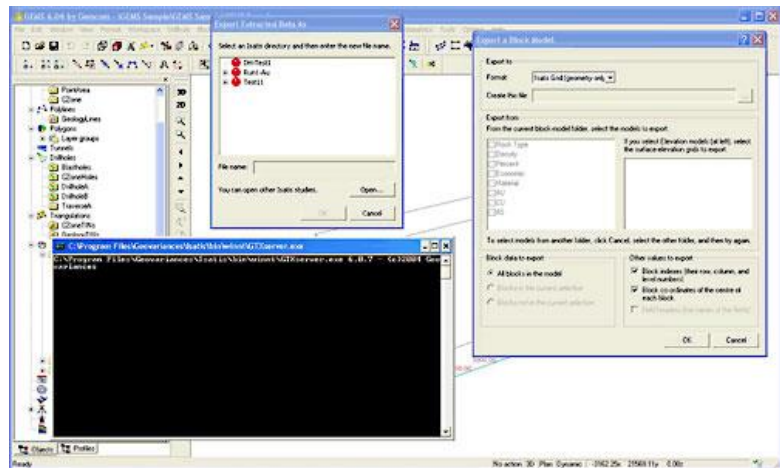
Exporting results from the Isatis package back into the unique GEMS database will be facilitated with ease through this integrated GEMS Isatis interface.



Gems points export to Isatis



Gems points export to Isatis



Gems block model export to Isatis

