

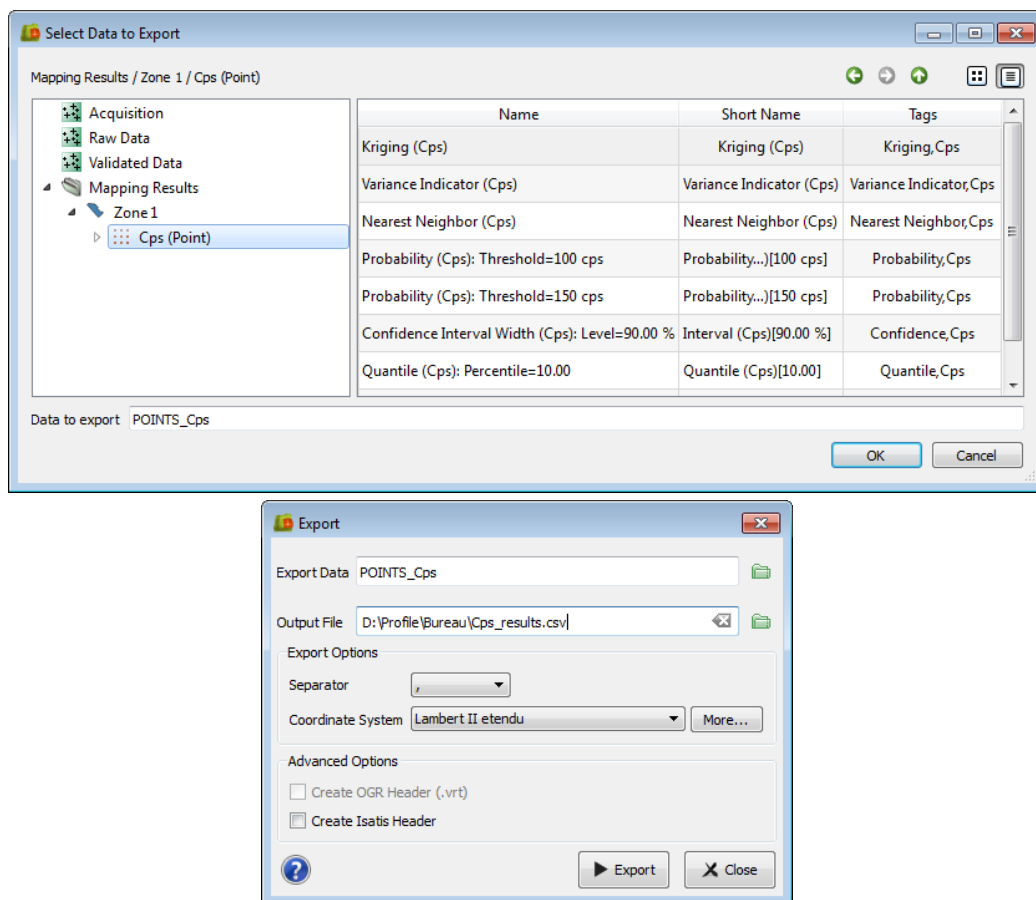
How to export results from Kartotrak

Results can be exported from Kartotrak under two different formats:

- csv files,
- geoTIFF files (only for 2D results).

1. Exporting a csv file

The Export window is reachable from the File/Export menu. Select then the results to export and define the output file.

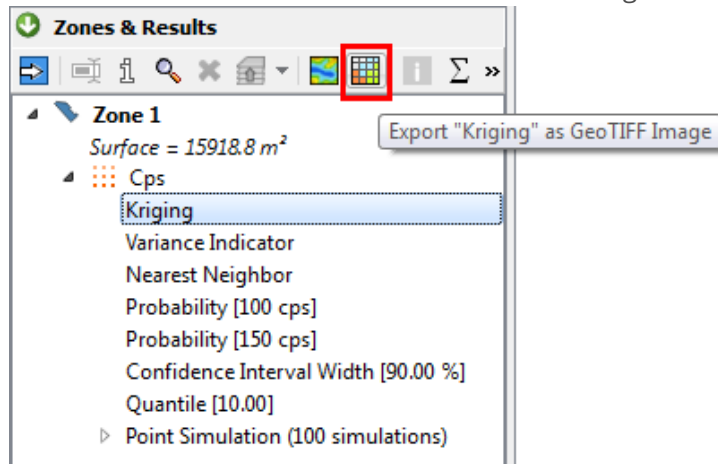


An option allows the creation of an associated header, which will make the file directly readable by Isatis through the import ASCII menu.



2. Exporting a geoTIFF file (only for 2D results)

This functionality is reachable from the Zones & Results area selecting a result variable.



A dedicated window file selector pops up to specify the name of the file in which you want to save the geolocalized image. The associated color scale will automatically be exported in a second file *file_name_legend.tif*. This one will not be geolocalized.

