

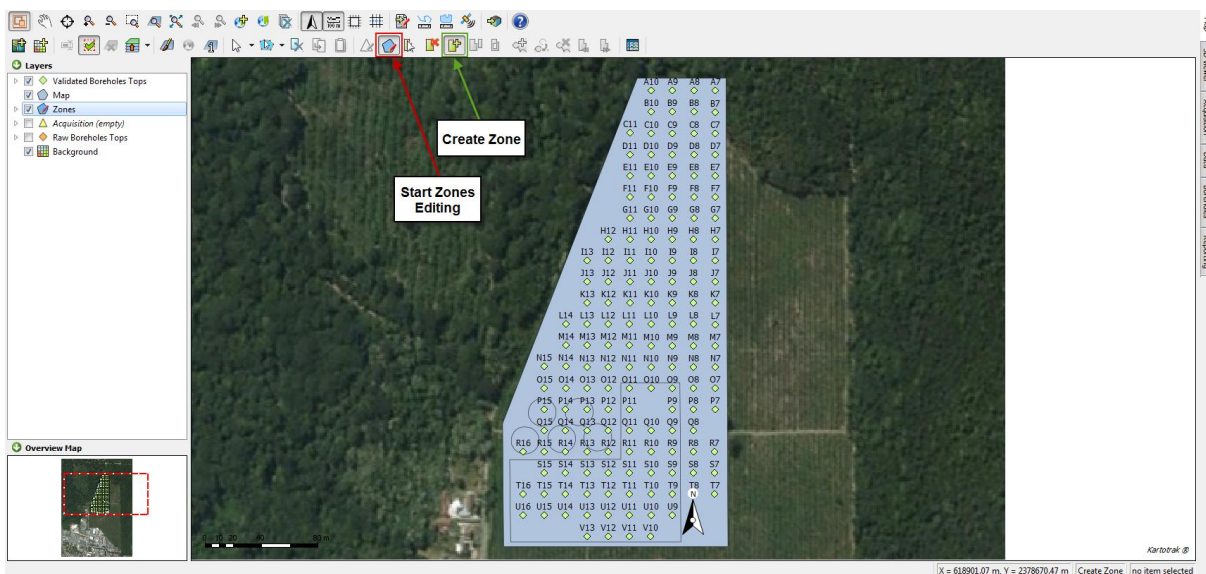
How to create zones with Kartotrak

In Kartotrak, the preliminary step before any definition of a sampling plan or before any mapping consists in defining a shape representing the zone of interest. Further calculations, as interpolation, will be restricted to this area of interest. The zone is identified by a polygon and can be defined into Kartotrak through two functionalities:

- The first one allows the manual digitalization of polygons,
- The second one enables the direct import of a polygon file.

1. Zones digitalization


When activating the layer zone in the Map window and clicking on the **Start Zones Editing** icon, different tools related to zones digitalization are reachable. Choose **Create Polygon** and click the mouse left button to digitize each vertex of your polygon. Use the right mouse button to close the contour. Holes corresponding for example to buildings and where you do not want to compute the interpolation can be added. The polygon can easily be modified by using the various options: **Delete Vertices, Move Vertices, Add Vertices...**



Polygons digitalization tools



2. Zones import

This functionality is reachable by clicking on  in the **Zones & Results** part of the 2D/3D Project Overview section. It allows you to import vector files containing polygons (as shapefiles for example). The imported polygons will be considered as zones. Importing polylines is also possible. In this case, polylines will be closed to be converted into a polygon. If several polygons are contained in the file, one zone will be created for each polygon.

